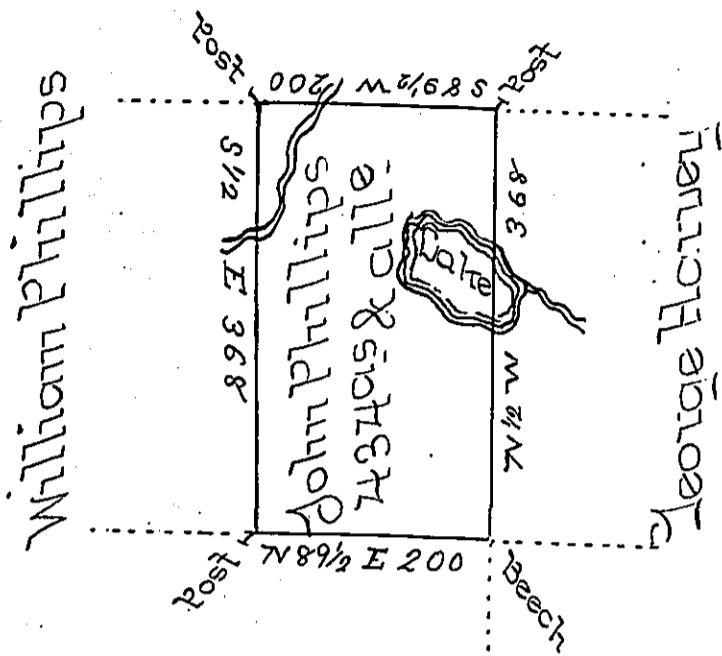


Mary Hewes



John Elu

In Pursuance of a Warrant Dated August 17<sup>th</sup> 1793.  
 Surveyed to John Phillips Sept<sup>r</sup>: 18<sup>th</sup> 1793 The above des-  
 cribed Tract of land situate on a branch of Ox bow Creek  
 in the County of Luzerne Containing Four Hundred &  
 thirty four Acres and allowance of 6 P.C.

Amos Crothers D.S.

Da<sup>r</sup>: Brodhead Esq<sup>r</sup>.  
 Surveyor Gen<sup>l</sup>.

IN TESTIMONY that the above is a copy of the original remaining on file in  
 the Department of Internal Affairs of Pennsylvania, made  
 conformably to an Act of Assembly approved the 16th day of  
 February, 1833, I have hereunto set my Hand and caused  
 the Seal of said Department to be affixed at Harrisburg,  
 this seventh day of February 1899.

*James W. Latta*  
 Secretary of Internal Affairs.